

MONTHLY MEMBERSHIP PROGRESS REPORT

LOCATION ENGLAND

District 105CE

Results as of: 6/30/2023

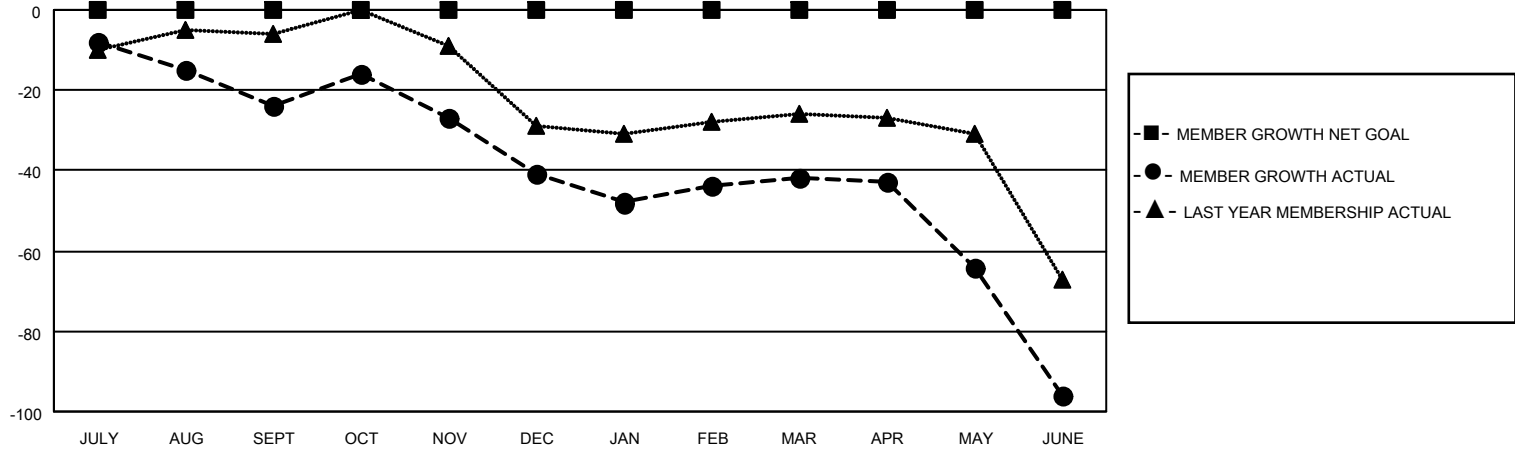
Clubs			
RESULTS FOR 2022-2023			
QUARTER	NEW CLUB GOAL	NEW CLUBS	DROPPED CLUBS
JULY/AUG/SEPT	0	0	3
OCT/NOV/DEC	1	0	0
JAN/FEB/MAR	0	0	1
APR/MAY/JUNE	1	0	1

Members			
RESULTS FOR 2022-2023			
QUARTER	MEMBER GROWTH NET GOAL	MEMBER GROWTH ACTUAL	DROPPED MEMBERS ACTUAL (including transfers)
JULY/AUG/SEPT	0	22	46
OCT/NOV/DEC	0	35	48
JAN/FEB/MAR	0	30	27
APR/MAY/JUNE	0	32	75

GOALS AND ACTUAL NEW CLUBS CUMULATIVE



GOALS AND ACTUAL MEMBERS CUMULATIVE



DROPPED CLUBS: 5	
DROPPED MEMBERS	
DECEASED	29
CLUB CANCELLED	8
OTHER	159
TOTAL	196

50 CLUBS OF 90 ADDED 1 OR MORE NEW MEMBERS

[CLICK HERE FOR CUMULATIVE MEMBERSHIP DATA](#)

<u>GENDER DISTRIBUTION</u>	
MALE	1,035 (69.32%)
FEMALE	458 (30.68%)
NON BINARY	0 (0.00%)
PREFER NOT TO ANSWER	0 (0.00%)
TOTAL FAMILY UNIT MEMBERS	260
FAMILY MEMBERS PAYING HALF DUES	132